



PLAYBILL

Volume 6, Issue 12



Main Event

Holiday Time is a Time for Giving

It is that time of year to give thanks for all we have and to give to families that are less fortunate than us. As has been a Broadway Promenade tradition for the past five years, we give tax deductible donations to **HOPE FAMILY SERVICE** serving domestic violence survivors in the Emergency Safe Shelter in Manatee County.

On December 17th we will be celebrating our Holiday Party. It would be thoughtful if you could bring a donation for Hope House. They need toys, books, videos (new or slightly used) for ages infants to teens. They also can use toiletries such as toothbrushes, toothpaste, etc. Pillows and blankets and twin sized linens are also needed.. I know you are very busy this time of year so a check made out to Hope Family Service will be greatly appreciated.

If you want to learn more about this organization or to see a more complete "Wish List" go to www.hopefamilyservice.org.

There is also a donation box and a list of needs in the 6 story mail room.

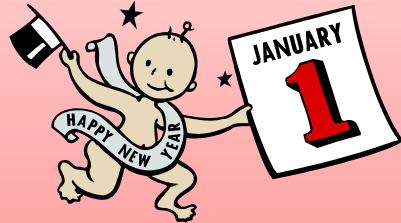
Thanking you in advance,

Susan Wilner, Apt. 1608

941-366-6667

Happy Hour

Friday - December 12 - 5pm -7pm - B.Y.O.B & a snack to share



New Year's Day Brunch

11:00 am - Bring a dish to share



Holiday Party

Please Join Us!

Wednesday, December 17, 2014 at 6:30 pm in the

CLUBROOM



Entrée Provided by our Social Committee

Please bring a Side Dish or Dessert to Share

Sign up at Front Desk or Lobby near Elevator

By DECEMBER 14TH

\$10.00 per person - B.Y.O.B.

Social Committee Request

The Holidays are fast approaching and we are collecting money to give to our great staff of 10 who does so much for us throughout the year. We will have envelopes in the 6 story mailroom in our staff gift box. Please place your money in the envelope by Dec. 13th. If you would like to mail your gift, please make a check payable to Zada Pirollo (the bank won't accept one made out to Broadway) and put Broadway Social Committee on the memo line. Mail to 1064 N. Tamiami Trail, Unit 1333, Sarasota, FL 34236. Also, if you would like to leave a gift for our wonderful mail lady, Lorraine, please leave it at the front desk.

SHOPPING CART COURTESY



PLEASE, PLEASE, PLEASE !

It is very important to remember to return shopping carts to Publix.

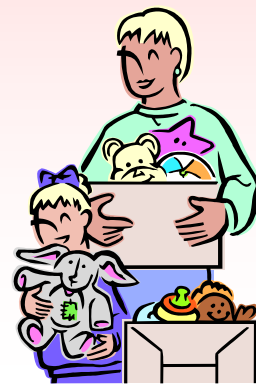
Carts are being left in the common areas (especially the garage). An unattended cart can be dangerous to your neighbors in case of emergency it blocks an open path and it is discourteous to the dedicated staff members who must remove and return abandoned carts.

THANK YOU FOR YOUR KIND COOPERATION!

A Note from the Management Office

Please notify the front desk or the office as soon as possible if you see "spots" on our new carpet.

Christmas deliveries are plenty - please pick up your packages promptly - our closet is bulging!



Nate's Maintenance Tips of the Month



When your slider doors become hard to use - do not reach for the WD-40! Use a siliconized lubricant. WD-40 can cause pitting and harm the rollers and tracks.

"Exercising" shut-off valves to the unit and washing machines, even for year-round residents will help to keep valves clear. That's helpful if and when an emergency happens.

Be sure to ask your a/c maintenance company if they are servicing the a/c condensate lines. A/C vendors have a special cleaner for these drains.



Holiday Traditions - Elf on the Shelf



The first rule of The Elf on the Shelf is that you can't touch the elf. The second rule of The Elf on the Shelf is that the elf will not speak or move while you are awake.



So where did this popular elf come from? The North Pole, of course, but he was popularized by Carol Aebersold and her daughter Chanda Bell.

In 2005, the children's picture book 'The Elf on the Shelf: A Christmas Tradition' was released by Aebersold and Bell. The premise was simple - this little elf was sent from the North Pole to watch over children. At night, the elf would return to Santa to tell him about the children's behavior and return home to take up a new position in the house.

In the last decade, this elf has collected numerous accolades, including Learning Express' Best Toy Award in 2008, 2009 and 2010.

For those of us that were not children of the new millennium, the Elf on the Shelf phenomenon is still fairly new but you can find photos of this watchful elf in all kinds of places and getting up to lots of mischief of his own.

December 2014 Sarasota Events

Every Saturday 7am - 1pm Downtown Market Lemon & Main and Wednesdays at 5 Points Park in front of Selby Library

Third Thursday Cocktails at Ca d'Zan 5 - 8 pm

Every Friday 'Live from Downtown—It's Friday Night. Street performers
6 - 9 pm (rotating locations each week)

Every Weekend beginning 12/5-6 Holiday Lights Spectacular—Sarasota Jungle Gardens

December now - 31 a live nativity scene will be on display Big Cat Habitat



12/4 - Holiday Splendor at The Ringling

12/5 - Holiday Night of Lights on St. Armand;s Circle

12/5 - 12/7 Sarasota Craft Show—Robarts Arena

12/6 - Nik Wallenda will tight rope walk at Sarasota Ford 3pm—6:30pm

12/6 - 19th Annual Sarasota Holiday Parade - route runs along Main Street - 7pm kickoff

12/7 - Anniversary of Attack on Pearl Harbor in 1941— May they rest in peace

12/13 - Sandy Claws Beach Run, 5k starts at 8:20 am

12/13 - Sarasota Christmas Boat Parade 6 pm

12/13-14 - Downtown Sarasota Holiday Arts & Crafts – 10 am-4 pm Phillipi Estate Park

12/14 - Christmas Concert and Community Carol Sing, First United Methodist Church 7– 9 pm

12/18 - Ringling By The Bay - 5pm - 8pm

12/19-21 - 4th Annual Snow Fest Sarasota - Payne Park, downtown Sarasota noon - 10pm

12/21 - A Taste of Chanukah, Sarasota Fairgrounds noon - 5pm

12/26-29 - Lights in Bloom at Selby Gardens 6 - 9 pm

12/31 - New Years Eve Fireworks, Marina Jacks Downtown Bayfront (tentative)

12/31 - New Year's Eve Party - Ritz Carlton 8pm - 1am, \$75



Hanukkah

For more details on local events:

www.escapetosarasota.com

Click on the Event Tab and choose your month



**Broadway Promenade
Condominium
Association, Inc.**

COMMITTEES

Tree House - Jo Rita Stevens
joritas@comcast.net

Social - Zada Pirollo,
zpirollo@yahoo.com

Susan Wilner
aaronsue69@gmail.com

Wish List - Joan Glidden
jiglidden@alumni.uottawa.ca

Fining - Bob Shaffer
Rp_Shaffer@yahoo.com

Communications -
Joe Niziolek joe@pcichicago.com

Interior Design - Mimi Gunthart
mimigunthart@gmail.com

WiFi - Bob Pirollo
bpirollo@yahoo.com

Front Desk and Office

Phone: 941-951-0260

Fax: 941-953-3970



**BROADWAY PROMENADE IS NOW ON
FACEBOOK!**

Please check us out and meet your
neighbors!

Cast and Crew

BOARD OF DIRECTORS

Dan Cerone - President - dtcerone@aol.com

Bob Pirollo - Vice President - bpirollo@yahoo.com

Aaron Wilner - Secretary - aaronsue69@gmail.com

Jonathan Whitney - Treasurer-
jonathanpwhitney@gmail.com

Ray Carty - Director - Raycarty2@me.com

Staff Support

Management

Stacia Searcy Scofero, LCAM, AMS, CMCA

Manager - stacia@cam-ss.com

Tomi Andrews - Office Manager

Tomi@broadwaypromenade.net

Cathy Runkle - Office/Front Desk

crunkle@broadwaypromenade.net

Concierge - (941) 951-0260

Darcie Borregard

Carl Jackson

Jerry Hansen

Chuck Britton

Bryan Bartholomew

Maintenance

Nathan Walsh - Maintenance Supervisor

Tony Suarez - Maintenance Assistant

Thank you Everyone!